

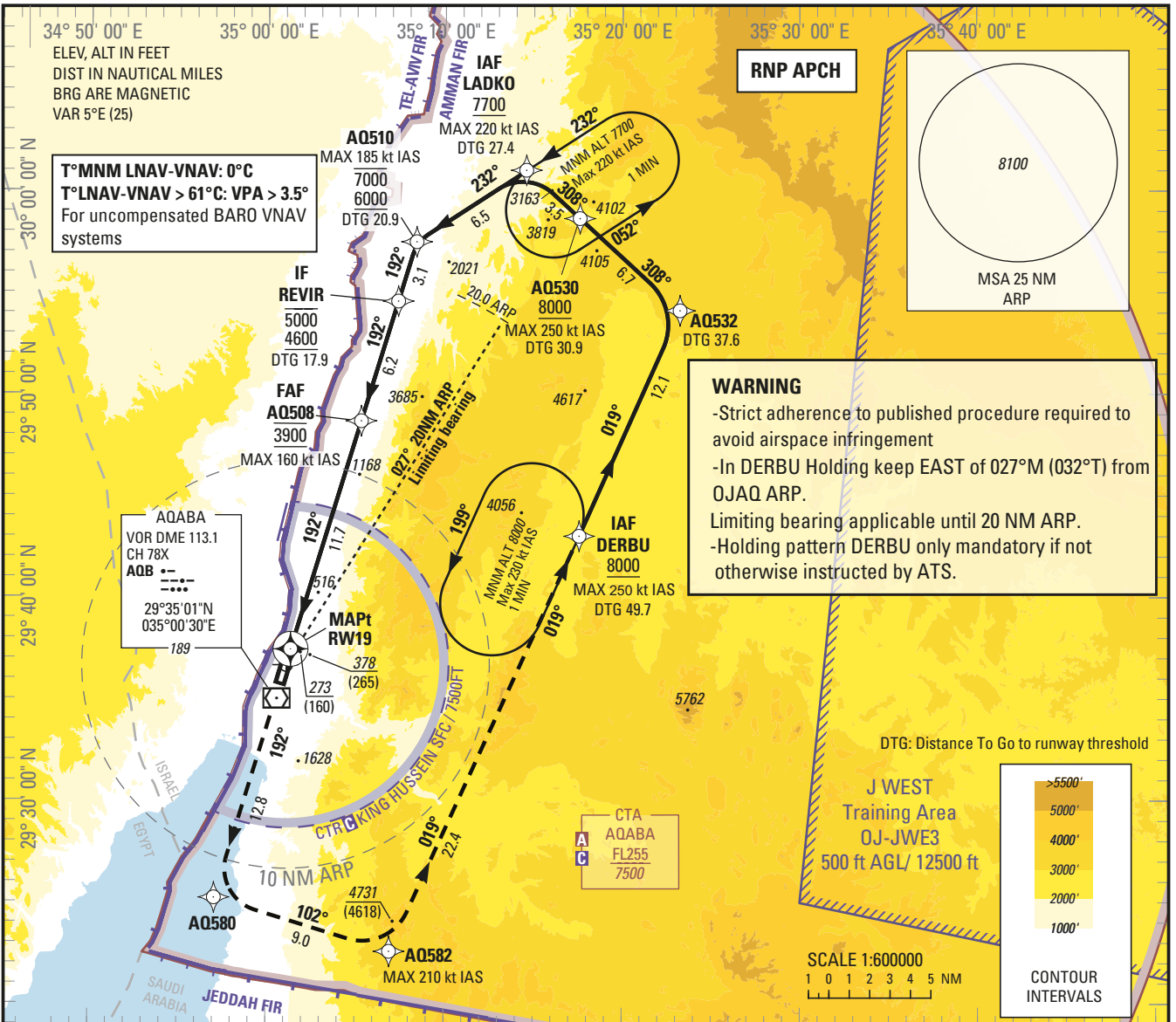
**INSTRUMENT
APPROACH
CHART — ICAO**

AERODROME ELEV 173 ft
HEIGHTS RELATED TO
THR RWY 19 — ELEV 113 ft

AQABA/King Hussein Intl. (OJAQ)

King Hussein Tower 119.2
Aqaba Sector 132.425

RNP RWY 19



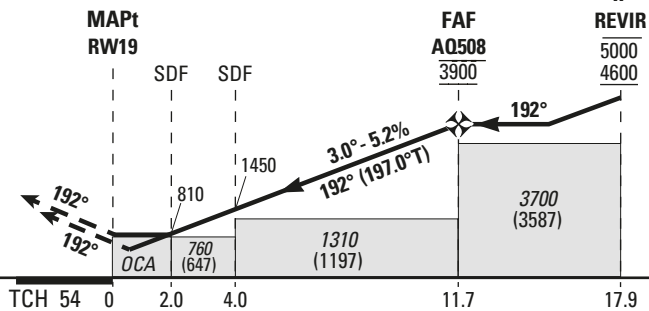
CHANGE: MAX SPEED AT DERBU & MISSED APP TEXT

NM to NEXT WPT	RW19	1	2	3	4	5	6	7	8	9	10	11
ALTITUDE		490	810	1120	1450	1760	2080	2400	2710	3030	3350	3670

TRANSITION ALTITUDE 13000
TRANSITION LEVEL FL 150

MISSED APPROACH:
Climb to AQ580 on course 192°M, then to AQ582 (MAX 210 kt IAS), then to DERBU (MAX 250 kt IAS) climbing to 8000 (7887) and hold or follow ATC instructions.

THR ELEV 113
NM to THR RWY 19



(1) OCA (H)	A	B	C	D	(1) For additional minima, see OJAQ AD 2.24.8-3								
LNAV/VNAV 2.5%	1710 (1600)	1780 (1670)	1900 (1780)	1920 (1810)	GS	kt	70	85	100	115	130	145	160
LNAV 2.5%	2330 (2210)	2440 (2320)	2610 (2490)		FAF-MAPT 11.7 NM	min:s	10:03	8:17	7:02	6:07	5:25	4:51	4:24
CIRCLING	NOT AUTHORIZED				Rate of descent	ft/min	370	450	530	610	690	770	850

INSTRUCTIONS

AQABA/King Hussein Intl. (OJAQ)

RNP RWY 19

Minima LNAV / VNAV

The standard LNAV / VNAV Minima below are determined for ACFT performing a LNAV/VNAV procedure which are able to maintain a climbing slope greater than 2.5% during a missed APCH.

<i>Slope in missed approach</i>	<i>OCA (H)</i>			
	A	B	C	D
3.0%	1290 (1170)	1360 (1250)	1490 (1380)	1520 (1410)
4.0%	580 (470)	670 (560)	820 (710)	860 (740)
5.0%	410 (300)	420 (310)	430 (310)	440 (320)

Minima LNAV

The standard LNAV Minima below are determined for ACFT performing a LNAV procedure which are able to maintain a climbing slope greater than 2.5% during a missed APCH.

<i>Slope in missed approach</i>	<i>OCA (H)</i>			
	A	B	C	D
3.0%	1810 (1700)	1940 (1830)	2150 (2030)	
4.0%	780 (670)	960 (850)	1230 (1120)	
5.0%	520 (410)			

Aeronautical Data Tabulation: IAC RNP RWY 19

WAYPOINT LIST					
Waypoint / Fix	Latitude	Longitude	Waypoint / Fix	Latitude	Longitude
LADKO	30°01'01.607"N	035°14'37.440"E	AQ530	29°58'39.219"N	035°17'35.565"E
AQ510	29°57'29.598"N	035°08'23.035"E	AQ508	29°48'40.552"N	035°05'16.945"E
REVIR	29°54'34.217"N	035°07'21.282"E	RW19	29°37'26.269"N	035°01'20.598"E
DERBU	29°43'01.646"N	035°17'34.251"E	AQ580	29°25'12.792"N	034°57'04.547"E
AQ532	29°54'07.665"N	035°23'14.652"E	AQ582	29°22'34.503"N	035°06'55.743"E

Holding instruction

Path Descriptor	Waypoint Identifier	Inbound Course °M (°T)	Leg Distance	Turn direction	Minimum Altitude (ft/FL)	Maximum Altitude (ft/FL)	Speed Limit (kt)	Magnetic Variation	Navigation Specification
Hold	DERBU	019 (024.0)	1 min	L	8000	14000	230	+5.0	RNP 1

Route Description: IAC RNP RWY19

RNP RWY19											
Serial Number	Path Descriptor	Waypoint Identifier	Fly - Over	Course °M (°T)	Magnetic Variation	Distance (NM)	Turn direction	Altitude (ft/FL)	MAX IAS (kt)	VPA/TCH (°/ft)	Navigation Accuracy (NM)
10	IF	LADKO	-	-	-	-	-	+7700	-220	-	RNP APCH
20	TF	AQ510	-	232 (237.0)	+5.0	6.5	-	-7000 +6000	-185	-	RNP APCH
30	TF	REVIR	-	192 (197.1)	+5.0	3.1	-	-5000 +4600	-	-	RNP APCH
10	IF	DERBU	-	-	-	-	-	+8000	-250	-	RNP APCH
20	HF	DERBU	Y	019 (024.0)	+5.0	-	L	+8000	-230	-	RNP APCH
30	TF	AQ532	-	019 (024.0)	+5.0	12.1	-	-	-	-	RNP APCH
40	TF	AQ530	-	308 (312.6)	+5.0	6.7	-	+8000	-250	-	RNP APCH
50	TF	LADKO	-	308 (312.6)	+5.0	3.5	-	+7700	-220	-	RNP APCH
60	TF	AQ510	-	232 (237.0)	+5.0	6.5	-	-7000 +6000	-185	-	RNP APCH
70	TF	REVIR	-	192 (197.1)	+5.0	3.1	-	-5000 +4600	-	-	RNP APCH
10	IF	REVIR	-	-	-	-	-	-5000 +4600	-	-	RNP APCH
20	TF	AQ508	-	192 (197.0)	+5.0	6.2	-	@3900	-160	-	RNP APCH
30	TF	RW19	Y	192 (197.0)	+5.0	11.7	-	@167	-	-3.0/ 54	RNP APCH
40	CF	AQ580	-	192 (197.0)	+5.0	12.8	-	-	-	-	RNP APCH
50	TF	AQ582	-	102 (107.0)	+5.0	9.0	-	-	-210	-	RNP APCH
60	TF	DERBU	-	019 (024.4)	+5.0	22.4	-	+8000	-250	-	RNP APCH